

Porsche Carrera Cup France 2024

Note Technique 10/2024

Chers tous,

Veuillez trouver ci-dessous la note technique 10/2024 applicable à votre Porsche 992 GT3 Cup.

Nous restons à votre disposition si vous avez des questions.

REPLACEMENT VOLET DE RESONANCE

Porsche Motorsport vous informe qu'un kit de remplacement du petit volet de résonance du système d'admission d'air est désormais disponible pour votre Porsche 911 GT3 Cup (type 992).

Dans le cas où celui-ci serait endommagé, ce kit permet de le remplacer à moindre coût. Il n'est donc plus nécessaire de remplacer le collecteur d'admission complet si ce problème apparaît.

1. Liste de pièces

Rep.	Référence	Description	Qté par voiture
1	9GT129941	Kit remplacement petit volet résonance	1

2. Installation et instructions de montage

Ce kit de remplacement est installé comme décrit dans le manuel technique (chapitre « 1.8 intake system »), voir extrait ci-dessous :

REVISION KIT RESONANCE FLAP

Porsche Motorsport informs that for the 911 GT3 Cup (992) a service kit is now available for the small resonance flap in the intake system. In the event of damage to the mechanic of the small resonance flap, this kit provides a cost-effective and appropriate repair option to supplement the existing possibility.

As a result, it is no longer necessary to replace the intake manifold assembly should any anomalies occur.

1. Parts list

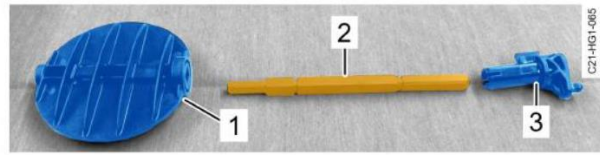
Pos.	Part number	Description	Qty per car
1	9GT129941	Service kit resonance flap small	1

2. Installation instructions and notes on use

The service kit is installed in the same way as described in the technical manual (chapter "1.8 intake system"), see extract below :

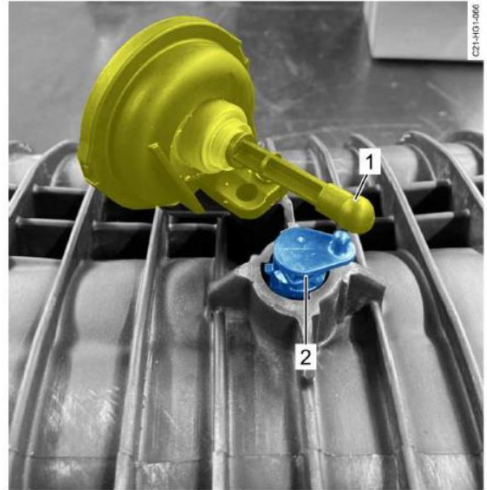
Revision small resonance flap

- [1] Resonance flap
- [2] Shaft
- [3] Lever

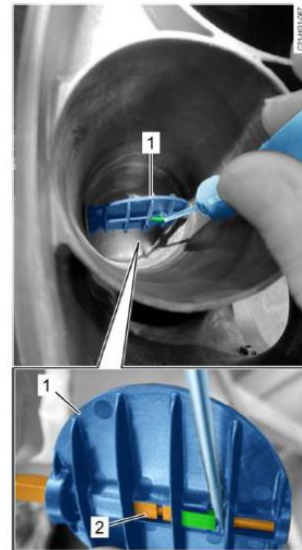


DISASSEMBLY

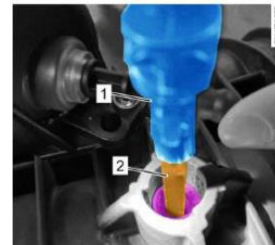
1. Remove the vacuum actuator [1] from the lever [2].



2. Unlock the latch [green] in the resonance flap [1] and loosen the shaft [2].

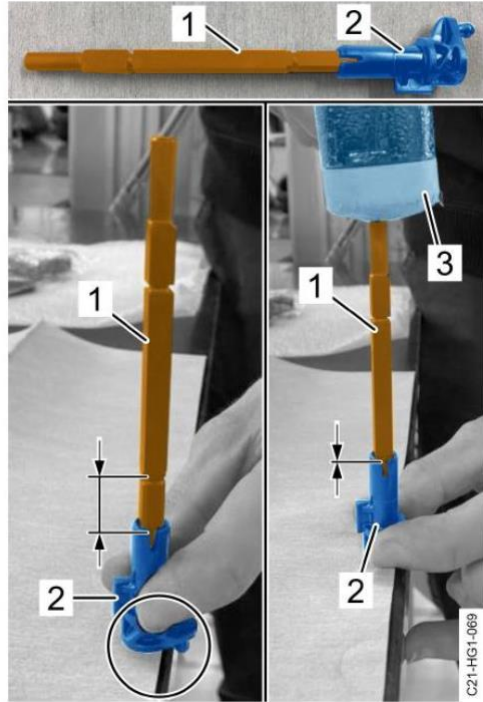


3. Pull out the lever [1] and shaft [2].
- NOTE:** The sealing ring [purple] must not be damaged.



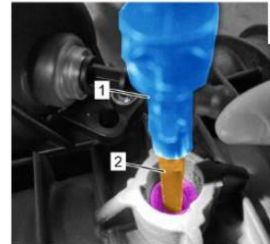
ASSEMBLY

1. Assemble the **new shaft [1]** by hand with the **new lever [2]**.
2. Place the lever **[2]** flat on the table edge **[circle marker]** and use the rubber hammer **[3]** to connect the shaft **[1]** completely (until the lock engages in the groove) with the lever **[2]**.



3. Insert lever **[1]** and shaft **[2]**.

NOTE: The sealing ring **[purple]** must not be damaged, if necessary, the sealing ring **[purple]** must be regreased.



4. Install the lever **[1]** in the lower position.

NOTE: Resonance flap **[2]** open when not pressurized.

NOTICE! The lock **[green]** of the resonance flap **[2]** points away **[arrow]** from the large resonance flap **[3]** when it is open.

